



## Prefab Buildings

### *Who oversees their Safety?*

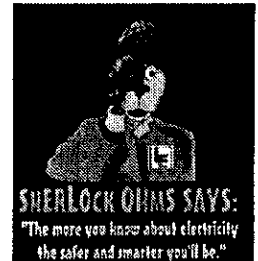
Question: With increasing frequency we encounter small prefabricated equipment buildings that are brought to the site already wired. Does UL (Underwriters Laboratories) provide a service for such buildings? If so, does the evaluation cover the equipment inside? and are building code rules applied?

Answer: Yes, UL classifies commercial buildings in accordance with the electrical, building or fire codes requested by the manufacturer. At the time of this writing there are twelve companies authorized to apply UL classification marking to commercial and industrial prefab buildings. This category includes buildings such as below ground controlled environment vault buildings, communications repeater buildings, flammable liquid and hazardous material storage buildings, toll booths, guard stations and similar prefabricated buildings. These buildings are classified in accordance with specific editions of the national Electrical Code and or building Codes. The classification marking indicates the specific codes used.

Classified buildings are provided with a classification marking on a data plate located in a visible location after the building is erected, usually near the service equipment or distribution panel board. The data plate is marked to indicate the appliances and equipment that are factory installed as part of the prefabricated building. If field interconnections are needed between sections of a building, those are also indicated.

In a situation where the building is already at the installation site, UL can provide a field evaluation service. The field evaluation would be conducted in accordance with the same requirements applied to a classified building. Buildings that comply with the requirements would be eligible for application of UL's field evaluated product mark. The involved authority having jurisdiction is notified when a field evaluation is conducted.

In cases where only a report covering the findings on a building is requested, UL can conduct a field investigation. The results of the investigation are contained in a written report. Field investigations do not result in application of a UL mark.



### **Inside**

- 1- Prefabs - Who oversees their Safety**
- 2- Christmas Light Recall**

### **Happy**

### **Thanksgiving**

# "Current" Events"

page 2

## CHRISTMAS LIGHT RECALL !!!

In cooperation with the U.S. Consumer Product Safety Commission (CPSC), two manufacturers are recalling about 30,225 Christmas light sets. The lights have no fuse protection and contain inadequate wiring, presenting a fire hazard.

The manufacturers participating in this recall are Thrifty Distributors and Golden Bay Enterprises, both of Hempstead, N.Y. CPSC and these manufacturers are not aware of any fires or injuries involving these lights. The recalls are being conducted to prevent the possibility of these incidents occurring.

Thrifty Distributors is recalling the following lights, about 225 sets, which can be identified by the following labeling on the box top: 35/2-way Flasher/Light Set and 35 Juego de luces de navidad-Pretested! Guaranteed to light! Weatherproof! Energy Saver! Replacement Bulbs!-Swallow Brand. Sold mainly in the N.Y. area.

Golden Bay Enterprises Recall: Golden Bay Enterprises is recalling the following light sets, about 30,000 sets, which can be identified by the following labeling on the box top. 50 / 3-way Flasher Christmas light set - Pre-tested-Guaranteed to light- when one bulb goes out rest remain lit - Spare bulb included - NOEL.

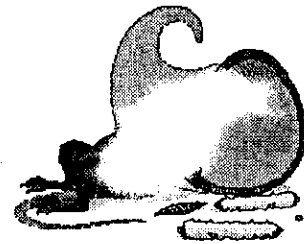
Golden Bay Enterprises sold the lights in discount stores in Florida from October through December 1996 for about a dollar. For information,

customers can call Golden Bay Enterprises at (800) 791-2960.

Consumers should stop using the recalled lights immediately, and return them to the store where purchased for a full refund.

So consumers beware, the CPSC recommends that you follow the following Christmas light suggestions.

Look for a label stating that the lights were tested by a recognized testing laboratory, such as UL. Check for fuses that guard against overload. An overload could cause a fire. Check each set of lights, new and old, for broken or cracked sockets, frayed or bare wires, loose connections and loose or missing bulbs. Replace defective bulbs, and if the set is damaged, do not buy or use the set. Please follow these helpful hints for a **Safe and a Merry Christmas !!!**



*Happy Thanksgiving !!!*

- Fire Alarm Systems
- Closed Circuit TV
- Telephone Systems
- Home Automation
- Surge Suppression
- Design and Build
- UPS Systems
- Commercial Electric
- Packing Houses
- Nurseries and Farms
- Electric Motors
- Automatic Gate Openers