

**LEWIS  
ELECTRIC**  
444 W. Mowry Street  
Homestead, FL 33030

**Thank You for downloading at the  
Lewis Electric Web Site.**

**We hope you found the information you  
were looking for and look forward to doing  
Business with you.**

**This information is Copyrighted by The  
Whistler Corporation and is subject to  
change without notice.**

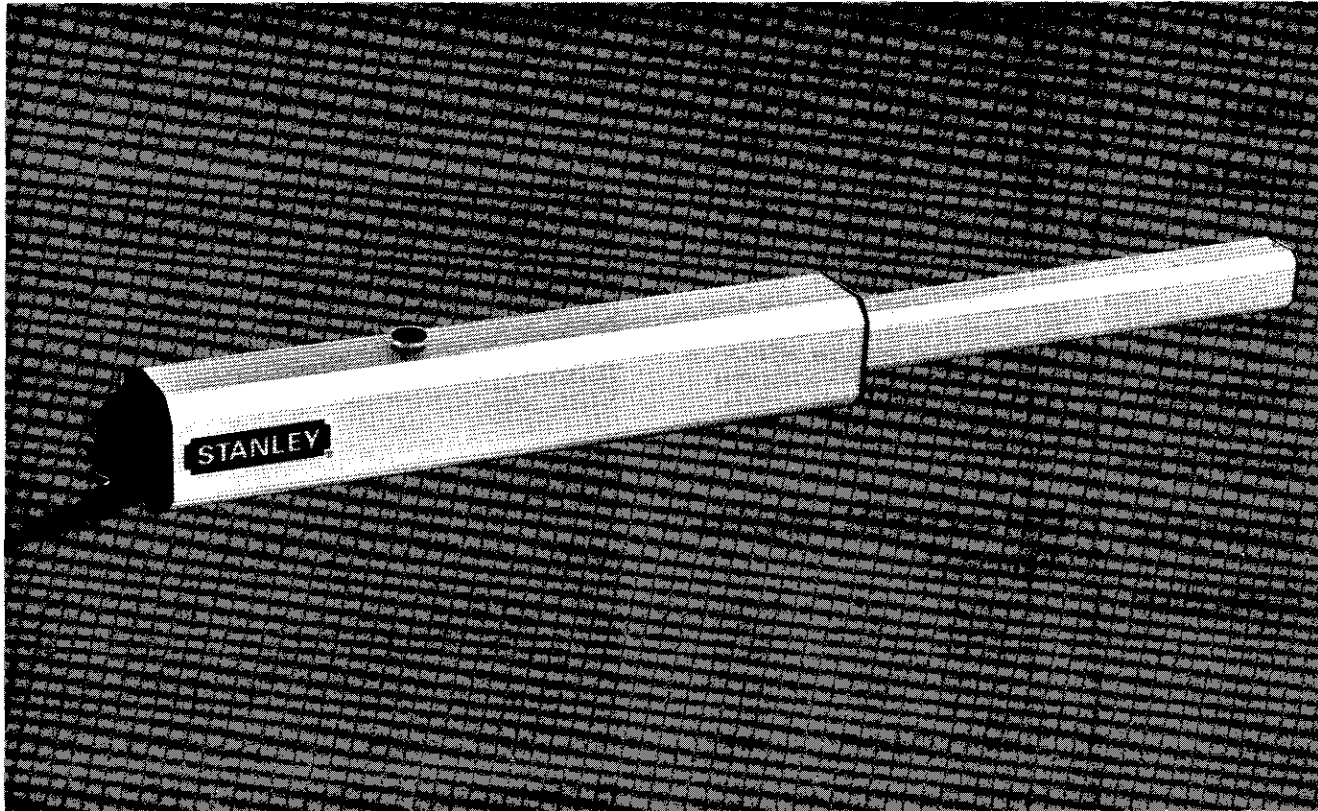
**Please read all of the Warnings regarding  
Installation and Design of a complete  
operator system!**



Dade County (305) 247-3721 Fax (305) 245-9347 Monroe County (305) 852- 7585  
State License - EC #0001734 Dade CC# 2005 Monroe EC# 807  
<http://www.lewiselec.com/> E-Mail [Info@lewiselec.com](mailto:Info@lewiselec.com)

# MODEL 460/460L (Long) HYDRAULIC OPERATOR

**For  
Medium-Duty  
Hydraulic  
Vehicular  
Swing Gate  
Operator  
Applications**



The Model 460 and 460L medium-duty hydraulic vehicular swing gate operators are designed to add security, convenience and reliability to your gate operating system. Because they're hydraulic, they have fewer moving parts, requiring less maintenance.

### **Typical Uses:**

Stanley's Model 460 hydraulic vehicular swing gate operator is ideal for many commercial applications. It's compact enough to fit on most gates, including gates that lack the space for a traditional gate operator.

Stanley's Model 460L is identical to the Model 460, except that it is longer with a greater rod stroke. It is ideal for mounting to brick columns or walls. In most cases, notching will not be necessary with the 460L.

### **Features:**

- Operator mounts easily to the gate
- Separate control box can operate a single gate or pair of gates working in tandem
- Full systems capability
- Manual release
- Easily adjustable limits and sensitivity
- Easily accessible control box utilizes plug-in components and is designed for the easy installation of accessories
- Virtually noise-free
- Low maintenance
- 1-year warranty
- UL listed (complete operator)

### **Depend on Stanley**

The Stanley name is your assurance of American-built quality. Stanley is the industry leader, with careful quality control procedures and operational testing during each step of production.

*A brochure on Gate Operating Safety is available from Stanley. Contact us for your copy.*

### **Distributed by:**

**STANLEY**

# HYDRAULIC SWING GATE OPERATOR

**Model**  
**460/460L**  
**Hydraulic**  
**Vehicular**  
**Swing Gate**  
**Operator for**  
**Commercial**  
**Applications**

## Specifications:

Model 460/460L Hydraulic Vehicular Swing Gate Operator shall have a 230 VAC 1 phase, 60 Hertz motor with current draw .7 amp, and 1700 R.P.M. Operator shall have a thermal overload of 135°C. Rod speed .50-.60 in./sec.; and output force maximum of 1500 lbs. The Operator's maximum pressure shall be 450 per square inch with 2 integral/adjustable pressure valves. The Operator's opening time shall be 20 seconds (90° opening). The Operator's control box shall be rated NEMA 4. The Operator shall have integral mounting flanges for ease of installation, and have provisions for locking. The Operator shall have hydraulic locking in both directions. The Operator shall use "Shell LHM" hydraulic fluid. The Operator shall be UL listed.

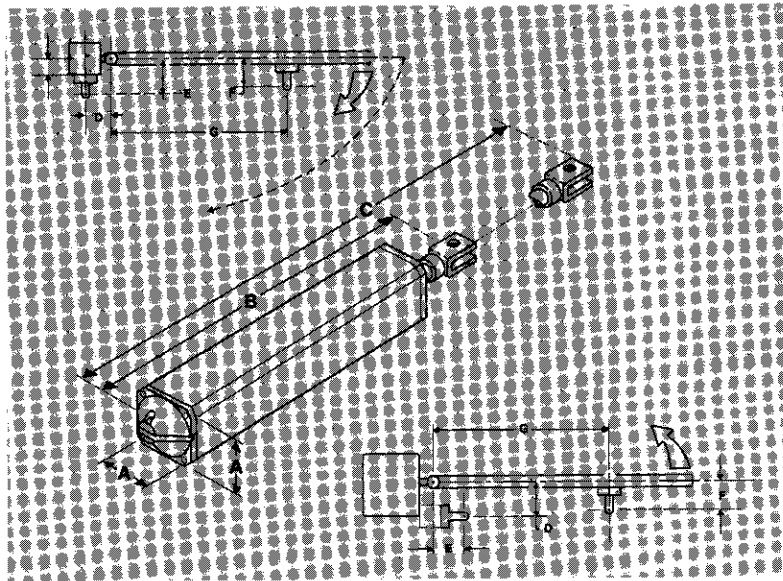
## Gate and Weight Capacities 460/460L\*:

Maximum Length	vs.	Maximum Weight
0 to 8 ft.		900 lbs.
8 to 10 ft.		900 lbs.
10 to 12 ft.		900 lbs.
12 to 14 ft. (460L only)		900 lbs.

\* For gates more than 12 ft. wide, a lock is recommended.

## Dimensions:

Model	A	B	C	D	E	F	G
460	3 1/2"	26 1/2" retracted	38" extended	5"	5"	3" - 3 1/2"	32" - 33"
460L	3 1/2"	38" retracted	48" extended	4 11/16"	10 1/2"	3 7/8"	43 1/8"



## Recommended Capacities of Model 460/460L:

Model	Power Consumption	Motor R.P.M.	Pulling Force	Pounds Per Square Inch	Maximum Gate Size	Maximum Gate Opening
460	160W	1700	1500 lbs.	450 max.	12 ft.	120°
460L	160W	1700	1500 lbs.	450 max.	14 ft.	120°

## Controls and Accessories to build your total system:

### Transmitters

Mini, Part No. 24910  
Single-Channel, Part No. 24911  
Two-Channel, Part No. 24904  
Four-Channel, Part No. 24905



Stanley digital radio transmitters offer 1,024 possible codes that can be changed at any time. The transmitters are powered by a 9-volt battery (12-volt for the Mini model) which is included. The two- and four-channel transmitters feature completely independent code settings which control separate receivers from one transmitter. They're perfect for operating multiple gate and door operating systems. Separate radio receivers may be required.

### Super Digital Radio Receiver

Part. No. 203203



Our digital radio receiver includes a coaxial socket antenna for clear reception. Especially suited for remote gate operation, the 3343001 kit includes the mounting bracket, antenna and 16-foot coax cable.

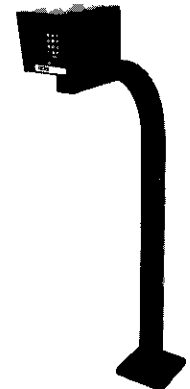
### Loop Detector



Provides the industry's most advanced features. Compact size and self-tuning make installation easy. Sensitivity boost allows detection of high vehicles. The detector has a loop diagnostics feature and selectable sensitivity levels to improve performance.

### Digital Keyless Entry

Allows access only to those who know the code using the telephone-like button panel.



**STANLEY**  
**GATE OPERATORS**

Stanley Door Systems  
1225 East Maple Road  
Troy, MI 48083  
(810) 528-1400