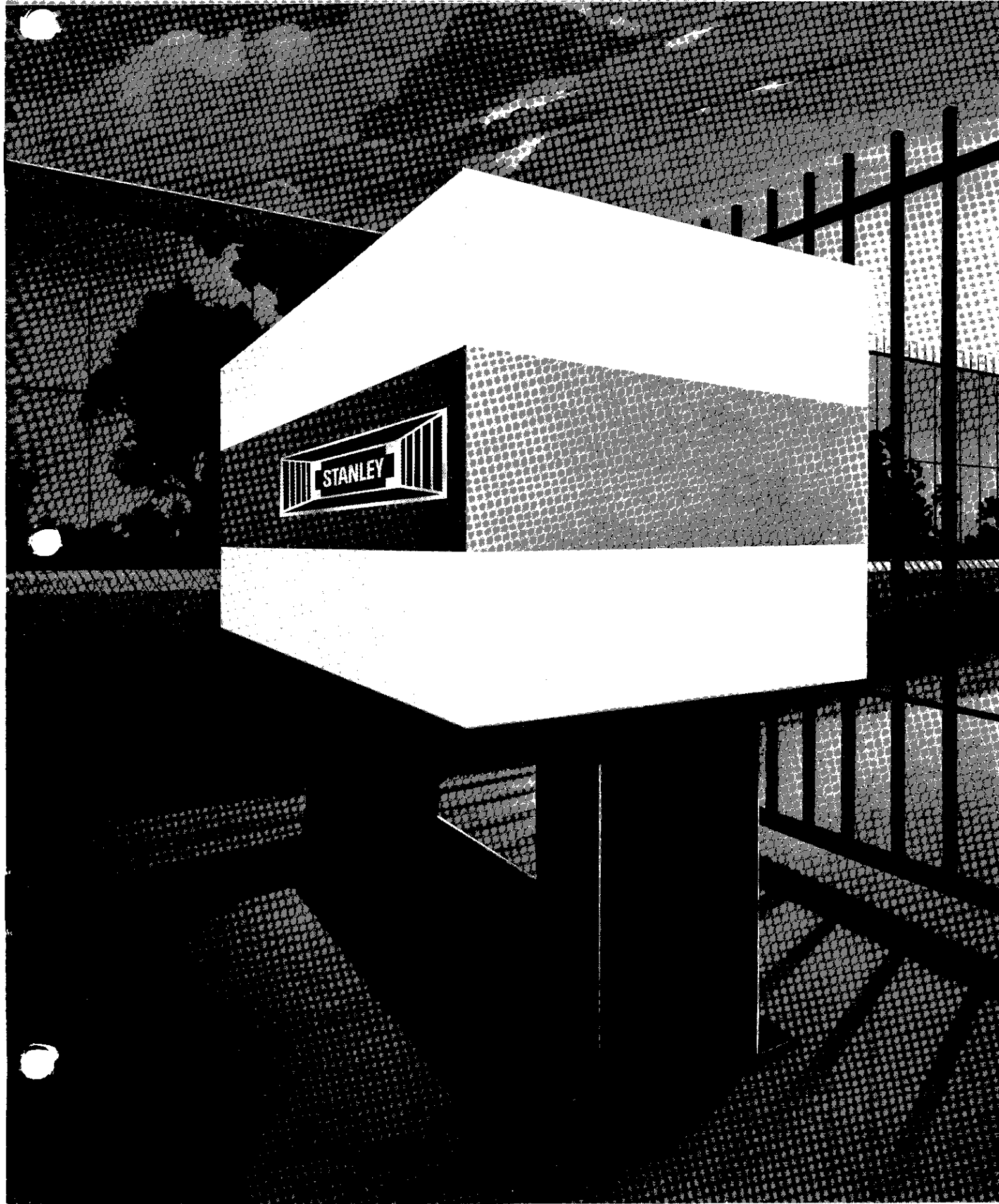


# STANLEY Automatic Gate Operators

02835/STA  
BuyLine 2924



# Stanley Automatic Gate Operators

## The industry leader in gate operators.

Stanley is the #1 manufacturer of gate operators. After all, we've been manufacturing gate operators in the U.S.A. for over 30 years now.

In no small measure, our number one standing in the industry is due to the commitment to continually improve the quality, reliability and safety of our products. As a result, we have earned the highest consumer confidence in the industry.

Stanley is the only gate operator manufacturer to offer a complete line

which covers most market requirements. From hydraulic slide gate operators for the high security market to electro-mechanical swing gate operators for the residential market, Stanley has the product to fit most any need.

And Stanley quality is second to none. All gate operators have been computer designed to the highest tolerances to reduce friction and wear. They're built with state-of-the-art electronics to make adjustments

and maintenance easier. The results are maximum performance and greater product life.

Stanley also makes the highest quality gate operator accessories, making ours the most complete line of gate operators available.

Combine our excellent products with an unparalleled commitment to service and support, and it's no wonder that Stanley has remained the first name in gate operators for so long.

---

## IMPORTANT WARNING!

The gate operators and control devices shown in this catalog are intended for use as components in a vehicular gate operating system. A separate access must be provided for pedestrian traffic.

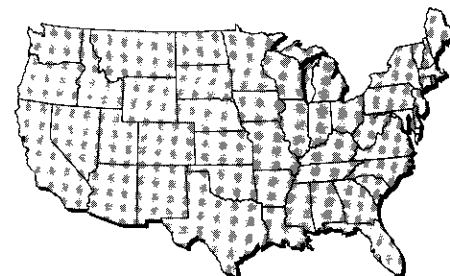
The gate operating system's designer must insure that the system is safe for its intended use. Safety devices appropriate to the application

are required for proper use of the gate operators shown in this catalog. **DANGER!** Failure to include appropriate safety devices as part of your system could result in death, severe injury or property loss.

If you are not familiar with gate operating system design contact your Stanley Master Distributor or Stanley Commercial Automation for assistance.

---

Manufactured in the U.S.A.



# Hydraulic Slide Gate Operators

## Models 670 and 690

Typical Use: Heavy-duty, high frequency commercial and industrial slide gate installations.

### Added Features:

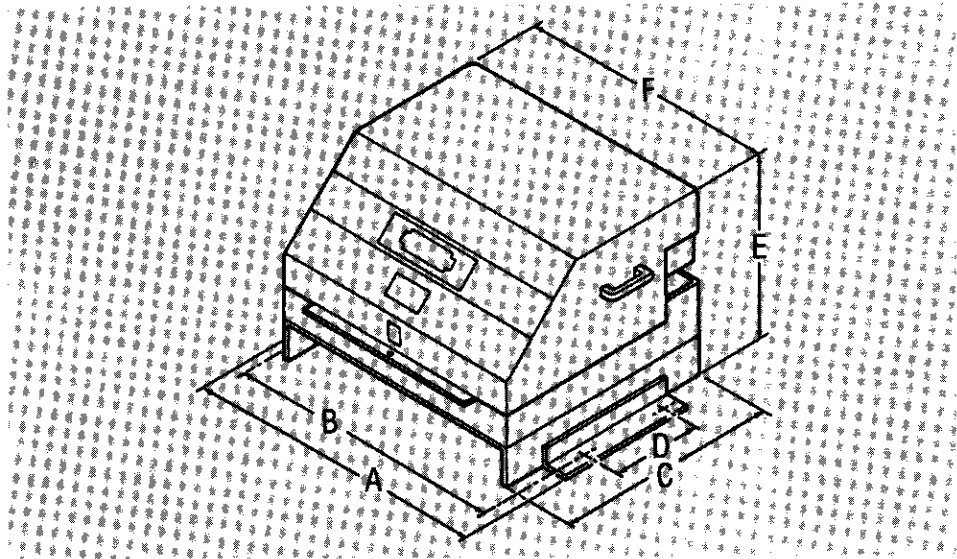
- 670 – 1 H.P. Motor
- 690 – 2 H.P. Motor
- Maximum run timer
- Delay on reverse
- 70 VA transformer
- Free wheeling hydraulic motors
- Continuous-duty rated
- Handles most gate lengths and weights
- Full systems capabilities
- Stan-Track guide wheel\*
- Easy right hand/left hand opening flexibility
- Power disconnect switch
- Outside disconnect available
- 1-year warranty
- UL Listed (complete operator)
- Optional cold weather hydraulic fluid is available(part #49083)

\* Stanley drive rail recommended.

### Specifications:

Model 670 heavy-duty Hydraulic Slide Gate Operator shall have a 1 H.P., \_\_\_ volt, \_\_\_ phase motor. Model 690 heavy-duty Hydraulic Slide Gate Operator shall have a 2 H.P., \_\_\_ volt, \_\_\_ phase motor. Operator shall have a minimum 3 gallon per minute capacity hydraulic pump. Motor shall be single direction high starting torque type. The Model 670 and Model 690 single-phase and three-phase motors are internally protected against overload. Motor shall have manual reset override protection. Motor contractor meets NEMA size "0" specifications. Limit switches are rated at NEMA 4/13 and are readily adjustable with modular construction. Operator shall have open override circuitry to provide complete control of gate (from external controls) while closing. Internal timer shall limit run time of the operator to a maximum of 90 seconds in any one direction to protect gate operating system. Reversal of gate from an open or safety device shall be delayed by 1.5 seconds to prevent shock load damage to the gate operating system. Operators shall have full systems capabilities so additional control systems can easily be added in the field. Operator control circuit shall have the built-in capability of providing a signal output if the gate does not reach the full close position within 90 seconds of activation. (Time may be extended for larger gates.) Gate speed shall be 18 in./second. Operator shall have housing of 14-gauge, painted galvanized steel. Operator shall have power disconnect switch at control box for safety. Operator shall be UL listed. If a single button control device is going to be used as an open and close control it is highly recommended that the one button control interface part #49180 be used.

### Dimensions:

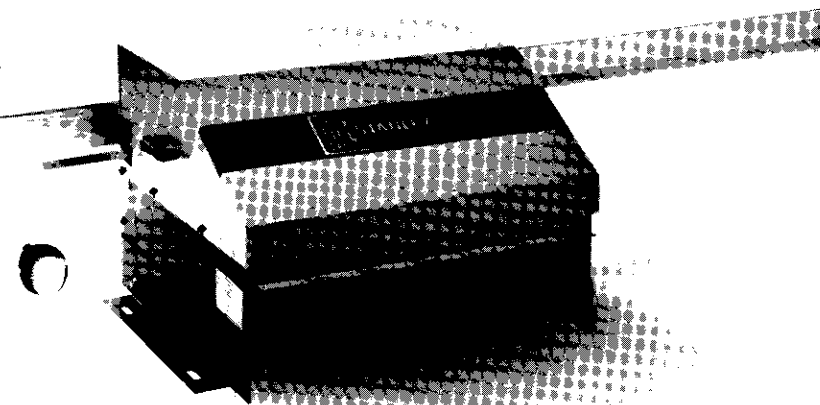


Model	A	B	C	D	E	F
670/690	31 <sup>3</sup> / <sub>4</sub> "	29 <sup>3</sup> / <sub>4</sub> "	26 <sup>1</sup> / <sub>2</sub> "	14"	19 <sup>3</sup> / <sub>4</sub> "	27"

### Recommended Capacities of Models 670/690\*:

Model	Motor	Gate Travel Speed Per Second	Maximum Gate Weight	Pulling Force	Pounds Per Square Inch	Maximum Gate Opening	Shipping Weight	Frequency of Use (Complete Cycles/Hour)**
670	1 H.P.	1.5 ft.	up to 3000 lbs.	144 lbs./motor	600	80 ft.	250 lbs.	continuous-duty rated
690	2 H.P.	1.5 ft.	up to 5000 lbs.	400 lbs./motor	1500	80 ft.	250 lbs.	continuous-duty rated

- \* Frictional forces on the gate operator system may affect total system efficiency.  
 \*\* Recommended sizes, lengths and travel time may affect frequency of use.



# Stanley Hydraulic Swing Gate Operators

**Now!**  
Available with  
Dual Hydraulic  
Locking

## Model 460/460L (Long)

Typical Use: Light to Medium Commercial Vehicular Swing Gate Operator Applications.

### 460/460L Added Features:

- Operator mounts easily to the gate
- Compact enough to fit on most gates that lack the space for a traditional gate operator
- Separate control panel can operate a single gate or a pair of gates working in tandem
- Full systems capability
- Manual release with keylock
- Easily adjustable limits and sensitivity
- Easily accessible control box utilizes plug-in components and is designed for the easy installation of accessories
- Virtually noise-free
- Low maintenance
- 1-year warranty
- UL/CSA listed (complete operator)

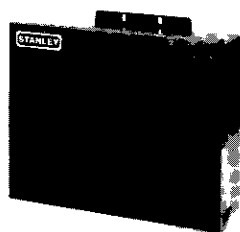
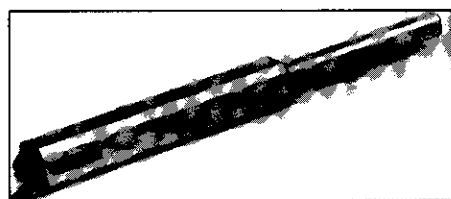
### Specifications:

Model 460 Hydraulic Vehicular Swing Gate Operator shall have a 230 VAC 1 phase, 60 Hertz motor with current draw .7 amp, and 1700 R.P.M. Operator shall have a thermal overload of 135°C. The Operator unit shall have a maximum rod stroke of 11.5 in., rod speed .50-60 in./sec.; and output force maximum of 1500 lbs. The Operator's maximum pressure shall be 450 pounds per square inch with 2 integral/adjustable pressure valves. The Operator's opening time shall be 20 seconds (90° opening). The Operator's control panel shall be rated NEMA 4. The Operator shall have integral mounting flanges for ease of installation, and have provisions for locking. The Operator shall have hydraulic locking in both directions. The Operator shall use standard readily available automatic transmission fluid. The Operator shall be UL listed.

### Gate and Weight Capabilities:

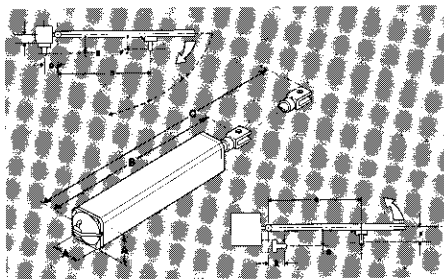
Maximum Length	vs.	Maximum Weight
0 - 8 ft.		900 lbs.
8 - 10 ft.		900 lbs.
10 - 12 ft.		900 lbs.
12 - 14 ft. (460L only)		900 lbs.

\*Please note that hydraulic locking is not intended to be a replacement for security type locks. External lock systems should be used if:  
a) High security is required for the installation. b) The length of the gate exceeds 12 feet. c) The gate has a large surface area. d) The installation area could have strong or gusty winds.



**Control Box**  
5200738

## Model 460/460L Dimensions:



Model	A	B	C
460	3 1/2"	26 1/2" retracted	38" extended
460L	3 1/2"	38" retracted	48" extended

	D	E	F	G
460	5"	5"	3"-3 1/2"	32"-33"
460L	4 1/16"	10 1/2"	3 7/8"	43 1/8"

### Recommended Capabilities of Model 460\*/460L\*:

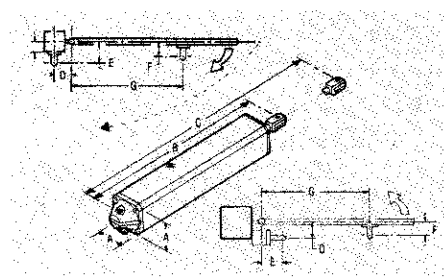
Model	Power Consumption	Motor R.P.M.	Pulling Force
460/460L	160W	1700	1500 lbs.

Pounds Per Square Inch	Maximum Gate Size	Maximum Gate Opening
450 max.	12 ft. (460)	120°
450 max.	14 ft. (460L)	120°

\* For gates more than 12 ft. wide, a gate lock is recommended.

## Model 440 Dimensions:



Model	A	B	C
440	3 1/2"	22" retracted	31" extended

	D	E	F	G
3 1/2" - 4"	3 1/2" - 4"	3" - 3 1/2"	25 1/2"	

### Recommended Capabilities of Model 440:

Model	Power Consumption	Motor R.P.M.	Pulling Force
440	335W	1700	830 lbs.

Pounds Per Square Inch	Maximum Gate Size	Maximum Gate Opening
426 max.	10 ft.	120°

## Model 440

Typical Use: Light Commercial Vehicular Swing Gate Operator Applications.

### 440 Added Features:

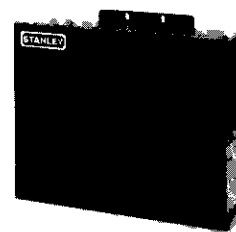
- Operator mounts easily to the gate
- Separate control panel can operate a single gate or a pair of gates working in tandem
- Full systems capability
- Manual release with keylock
- Easily adjustable limits and sensitivity
- Easily accessible control panel utilizes plug-in components and is designed for the easy installation of accessories.
- Virtually noise-free
- Low maintenance
- 1-year warranty
- UL/CSA listed (complete operator)

### Specifications:

Model 440 Hydraulic Vehicular Swing Gate Operator shall have a 115 VAC 1 phase, 60 Hertz motor with current draw of 3.5 amp, and 1700 R.P.M. Operator shall have a thermal overload of 135°C. The Operator unit shall have a maximum rod stroke of 8.6 in., rod speed of .50 in./sec.; and output force maximum of 830 lbs. The Operator's maximum pressure shall be 426 pounds per square inch with 2 integral/adjustable pressure valves. The Operator's opening time shall be 18 seconds (90° opening). The Operator's control panel shall be rated NEMA 4. The Operator shall have integral mounting flanges for ease of installation, and have provisions for locking. The Operator shall use standard readily available automatic transmission fluid. The Operator shall be UL listed.

### Gate and Weight Capabilities:

Maximum Length	vs.	Maximum Weight
0 - 8 ft.		500 lbs.
8 - 10 ft.		300 lbs.



**Small Control Panel**  
24997  
(Also available)

**Large Control Panel**  
24600  
(Shown)

# 230V SLIDE GATE OPERATORS

492331 STA  
Rev. 1/16/2024

## Model 540

Typical Use: Light to medium-duty commercial installations

### 540 Added Features:

- 1/3 or 1/2 H.P., 115V or 230V single-phase and 1/2 H.P. 230V three-phase resilient mount motors
- Advanced Audio Warning Module
- Fixed center bronze bearings on output and intermediate shafts
- 35 VA transformer
- 4L V-belt, chain and sprocket motor speed reduction
- #41 output sprocket, idler sprockets, and drive roller chain
- UL/CSA listed

### Specifications:

MODEL 540 Slide Gate Operator shall have a (minimum 1/3 H.P.) \_\_\_\_\_ volt, single-phase high starting torque reversible motor protected against overload and undervoltage in both the start and run windings with automatic reset. Motor contactor meets NEMA size "0" specifications. Limit switches are readily adjustable and securely locked in place after adjustment. 4L V-belt, chain and sprocket motor speed reduction, with adjustable friction clutch for mechanical overload protection. Unit shall have an adjustable solenoid activated disc-type brake and a manual disconnect. Operator shall have open override circuitry to provide complete control of gate (from external controls) while closing. Adjustable internal timer limits run time of the unit to maximum 90 seconds in any one direction and delays reversal of gate 1.5 seconds when signaled by an open button or safety device, to protect operator life. Operator shall have an audible warning alarm system which provides a 3 to 5 second advance warning that the gate operator is about to begin operation and should continue until the gate comes to a complete stop. Full systems capabilities so additional control systems can easily be added in the field. Housing of 16-gauge painted galvanized steel. Power disconnect switch. UL/CSA listed.

## Model 550

Typical Use: Medium-duty commercial and industrial installations

### 550 Added Features:

- 1/2, 3/4 H.P. motor (resilient mount on single-phase operators; available in all standard voltages)
- Advanced Audio Warning Module
- Heavy-duty ball bearings on output and intermediate shafts
- 70 VA transformer
- 4L cogged V-belt, chain and sprocket motor speed reduction
- #40 output sprocket, idler sprockets, and drive roller chain
- UL/CSA listed

### Specifications:

MODEL 550 (1/2, 3/4 H.P.) Slide Gate Operator shall have a (minimum 1/2 H.P.) \_\_\_\_\_ volt, \_\_\_\_\_ phase high starting torque reversible motor. Single-phase motor is internally protected against overload and undervoltage in both the start and run windings with automatic reset. Three-phase motor has external manual reset overload protection. Motor contactor meets NEMA size "0" specifications. Limit switches are readily adjustable and securely locked in place after adjustment. 4L cogged belt, chain and sprocket motor speed reduction, with adjustable friction clutch for mechanical overload protection. Unit shall have an adjustable solenoid activated disc-type brake, and a manual disconnect. Operator shall have open override circuitry to provide complete control of gate (from external controls) while closing. Adjustable internal time limits run time of the unit to maximum 90 seconds in any one direction and delays reversal of gate 1.5 seconds when signaled by an open button or safety device, to protect operator life. Operator shall have an audible warning alarm system which provides a 3 to 5 second advance warning that the gate operator is about to begin operation and should continue until the gate comes to a complete stop. Full systems capabilities so additional control systems can easily be added in the field. Housing of 16-gauge painted galvanized steel. Power disconnect switch. UL/CSA listed.

## Model 570

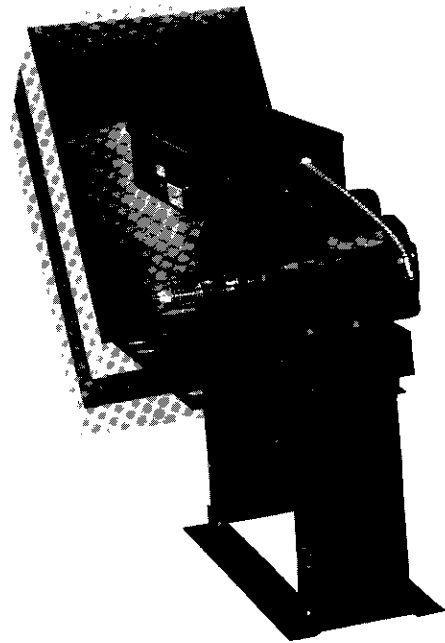
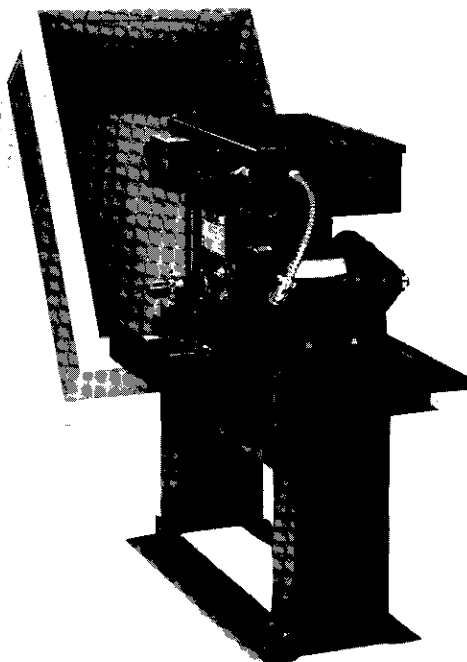
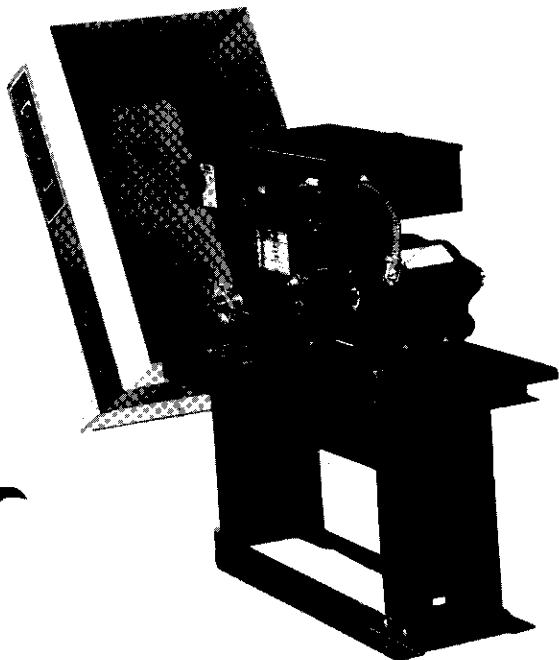
Typical Use: Heavy-duty, high frequency commercial and industrial installations

### 570 Added Features:

- 1 H.P. motor (resilient mount on single-phase operators; available in all standard voltages)
- Advanced Audio Warning Module
- Heavy duty bearings on output and intermediate shafts
- 70 VA transformer
- 4L cogged V-belt, chain and sprocket motor speed reduction
- Twin disc clutch fact assembly
- #50 output sprocket, idler sprockets, and drive roller chain
- UL/CSA listed

### Specifications:

MODEL 570 Slide Gate Operator shall have a 1 H.P. \_\_\_\_\_ volt, \_\_\_\_\_ phase high starting torque reversible motor. Single-phase motor is internally protected against overload and undervoltage in both the start and run windings with automatic reset. Three-phase motor has external, manual reset, overload protection. Motor contactor meets NEMA size "0" specifications. Limit switches are readily adjustable and securely locked in place after adjustment. 4L cogged belt, chain and sprocket motor speed reduction, with adjustable twin disc friction clutch for mechanical overload protection. Unit shall have an adjustable solenoid activated disc-type brake, and a quick disconnect for manual operation. Operator shall have open override circuitry to provide complete control of gate (from external controls) while closing. Internal timer limits run time of the unit to maximum 90 seconds in any one direction and delays reversal of gate 1.5 seconds when signaled by an open button, or safety device, to protect operator life. Operator shall have an audible warning alarm system which provides a 3 to 5 second advance warning that the gate operator is about to begin operation and should continue until the gate comes to a complete stop. Full systems capabilities so additional control systems can easily be added in the field. Housing of 16-gauge painted galvanized steel. Power disconnect switch. UL/CSA listed.





# Stanley Slide Gate Operators

## \*NEW MODEL

### Model 545

Typical Use: Medium-duty commercial and industrial applications

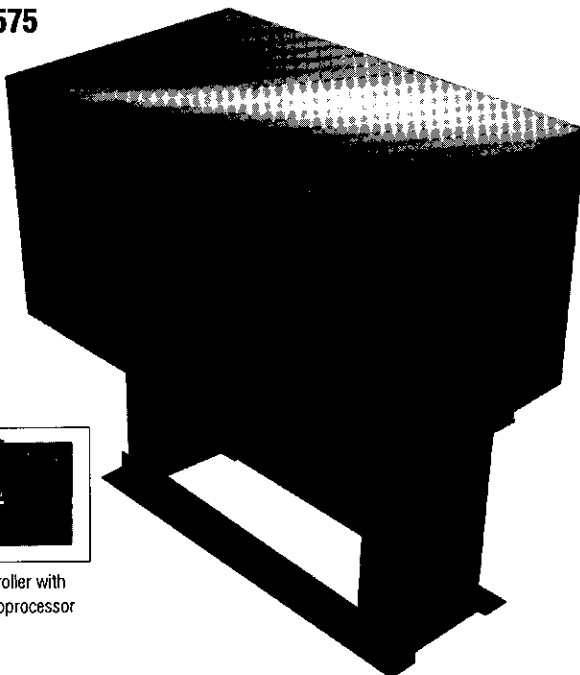
#### 545 Added Features:

- 1/3 or 1/2 H.P. motors, available in single or three phase
- Intelligent microprocessor control
- Full systems capability
- Built-in obstruction sensing system
- Advanced audio warning module
- Built-in R.H./L.H. selectable
- Built-in master/slave capability
- Built-in time delay to close
- Solenoid activated brake
- Mechanical discount for emergency, manual operation

#### Specifications:

• 1/3 or 1/2 H.P. motors, 1/3 H.P. in 115-volt or 230-volt single-phase and 230-volt three phase. 1/2 H.P. versions in dual voltage (115/230-volt) single phase and dual voltage (230/460-volt) three phase. 1/2 H.P. motors are T.E.N.V./NEMA 56 frame / and also incorporate an electronic instant reverse switch. • Single disc, slipping clutch assembly. • Fixed center oil impregnated bronze bearings on intermediate and output shafts. • 70 va. power transformer. • 20 va. isolation transformer. • 4L V-belt, #41 chain and sprocket speed reduction system. • #41 output sprocket, idler sprockets, and drive roller chain. • Mechanical disconnect for manual operation of gate. • Digital microprocessor. Most features are programmable from this circuit board. Isolated from voltage spikes and surges by the isolation transformer and isolation interface circuit board. • Isolation interface circuit board. Protects the digital microprocessor. All inputs and outputs go through this board which is "piggy backed" on the microprocessor board. • Nine (9) independent programs for configuring a complete gate system. • Complete on board LED (light emitting diode), system for trouble shooting, programming assistance, power on indication. • Fused secondary.

### Model 545 & 575



Electronic Controller with the Smart-Microprocessor

## \*NEW MODEL

### Model 575

Typical Use: Heavy-duty, high frequency commercial and industrial installations

#### 575 Added Features:

- 1 H.P. motor, available in single or three phase
- Intelligent microprocessor control
- Full systems capability
- Built-in obstruction sensing system
- Advanced audio warning module
- Built-in R.H./L.H. selectable
- Built-in master/slave capability
- Built-in time delay to close
- Solenoid activated brake
- Mechanical discount for emergency, manual operation

#### Specifications:

• 1 H.P. motors, single or three phase dual voltage (115/230-volt) single phase and dual voltage (230/460-volt) three phase. Motors are T.E.N.V./NEMA 56 frame / and also incorporate an electronic instant reverse switch. • Double disc, slipping clutch assembly. • Heavy duty flange type bearings on intermediate and output shafts. • 70 va. power transformer. • 20 va. isolation transformer. • 4L-clogged V-belt, #41 chain and sprocket speed reduction system. • #50 output sprocket, idler sprockets, and drive roller chain. • Mechanical disconnect for manual operation of gate. • Digital microprocessor. Most features are programmable from this circuit board. Isolated from voltage spikes and surges by the isolation transformer and isolation interface circuit board. • Isolation interface circuit board. Protects the digital microprocessor. All inputs and outputs go through this board which is "piggy backed" on the microprocessor board. • Nine (9) independent programs for configuring a complete gate system. • Complete on board LED (light emitting diode), system for trouble shooting, programming assistance, power on indication. • Fused secondary. • NEMA size "0" motor reversing contactor. • Limited one year warranty. • U.L. and C.U.L. listed.

## Model 590 Gearhead

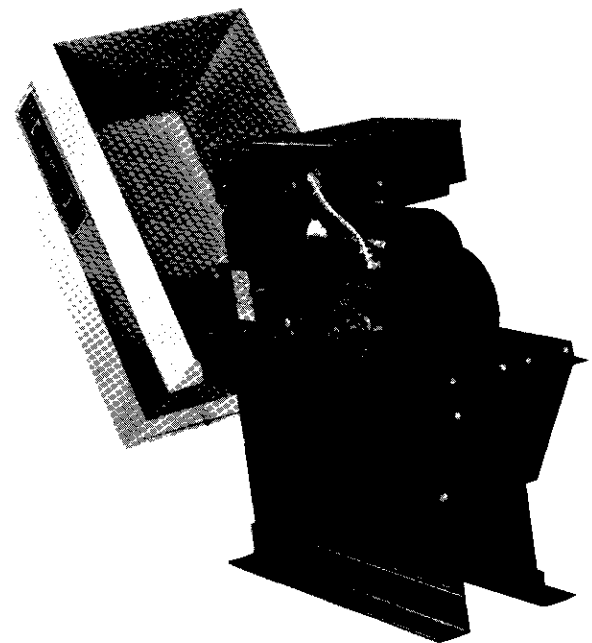
Typical Use: Heavy-duty, oversized installations

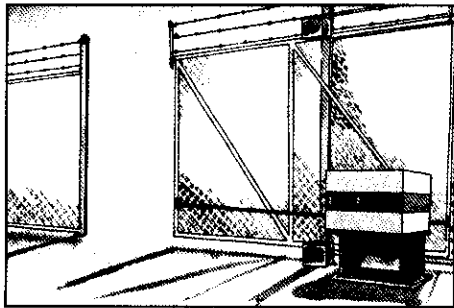
#### 590 Added Features:

- 2 H.P. 230V, 460V and 575V three-phase C-face motor
- 20:1 worm gear with additional chain reduction
- Advanced Audio Warning Module
- 70 VA transformer
- Roller lever-type limits on gates over 50' wide standard rotary limits under 50'
- Torque limiter on output shaft
- Hand crank for manual operation
- #50 output sprocket, idler sprockets, and drive roller chain

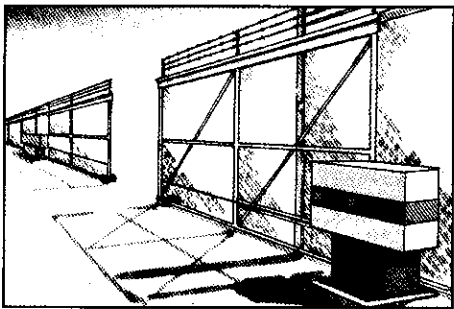
#### Specifications:

MODEL 590 Slide Gate Operator shall have a 2 H.P. \_\_\_\_\_ volt, 3-phase motor attached to a 20:1 "C" face worm gear speed reducer. Worm gear output speed shall be reduced by #50 chain & sprockets to achieve final output speed of 38 RPM. Motor shall be a reversible high starting torque type. Thermal motor overload protection shall be provided with circuitry to prevent automatic start-up upon reset. Motor reversing contactor meets NEMA size "0" specifications. Operator shall have color-coded open override circuitry to provide complete control gate (from external controls) while closing. Limit switches are readily adjustable and securely locked in place after adjustment. External NEMA 4 switches shall be provided for gates over 50 feet. Internal rotary-type limits shall be provided on gates 50 feet or less. Control panel shall be pre-wired to accept manual single and three-button control stations, radio controls, timer to close, vehicle detectors and other optional control devices. Mechanical overload protection shall be provided on output shaft of operator by means of an adjustable friction-type torque limiter. Output shaft shall be supported by pillow block bearings. Adjustable internal timer limits run time of the unit to maximum 90 seconds in any one direction (may be modified for longer run times if necessary. Consult the factory.) and delays reversal of gate 1.5 seconds when signaled by an open button or safety device, to protect operator life. Operator shall have an audible warning alarm system which provides a 3 to 5 second advance warning that the gate operator is about to be operation and should continue until the gate comes to a complete stop. Full systems capabilities so additional control systems can easily be added in the field. Housing of 16-gauge painted galvanized steel. Power disconnect switch. #50 chain shall be provided to drive gate.

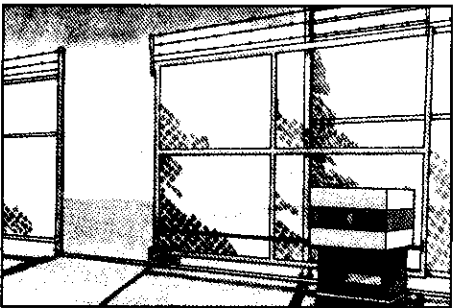




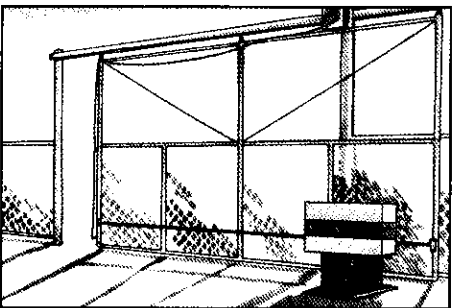
**CANTILEVER** Stanley gate operators are ideally suited for cantilever gates, the most widely used slide gate application. Compatible with single or double applications.



**ROLLER** Single or double-slide roller gates can be handled by Stanley's standard gate operators. Larger openings require Model 590.



**V-TRACK** Same capacities as roller gates. Used most frequently in warm-weather climates.



**OVERHEAD** Stanley operators easily handle large overhead gates with single and double-slide openings.

All these units (excluding \*530) have "TOTAL SYSTEMS" capabilities to give you added security and perimeter control.

\*Not shown in this catalog

## Uses And Applications

Stanley offers a full line of automatic slide gate operators to easily handle most common installations. Typical applications can be found on this page.

### General Features

- 320.0663 three-button control station standard (excluding Models \*530, 540)
- Single-button open override circuit
- Belt, chain and sprocket motor speed reduction (worm gear on Models 590 and \*530)
- Four-inch friction clutch\*\* (torque limiter on 590)
- Contactor starter (excluding Model \*530)
- Adjustable rotary-driven open/close limit switches
- Manual disconnect in case of power failure (excluding Model \*530)
- Solenoid activated brake to reduce gate coasting (excluding Model \*530)
- Weather-resistant, lockable cover is removable for ease of maintenance
- Mounting hardware and roller chain to connect to working gate
- Power disconnect switch
- 24-volt control circuit
- Will accept external reversing devices

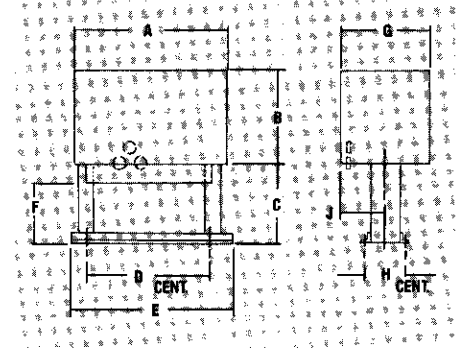
### Frequency of Use – Cycles Per Hour: (Cycle = 1 Full Open and Full Close)

Gate Opening in Feet	Cycles Per Hour					
	30	22	18	15	12	11
12	✓					
16	✓					
20	✓					
24	✓					
30	✓					
40		✓				
50			✓			
60				✓		
70					✓	
80						✓

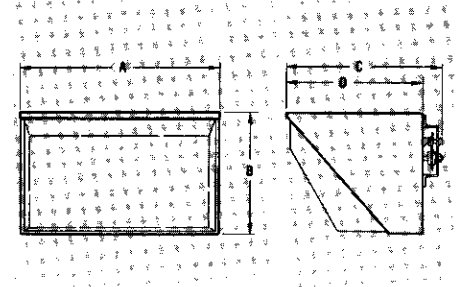
### Specifications And Recommended Capacities:

Model	Motor	Gate Travel Speed Per Min.	Maximum Gate Weight	Maximum Overhead Gate Opening	Maximum Cantilever Gate Opening	Maximum Roller/V-Track Gate Opening	Shipping Weight
530	1/3 HP	49 ft.	150 lbs.	N.A.	14 ft.	14 ft.	50 lbs.
540-3	1/3 HP	57 ft.	550 lbs.	24 ft.	16 ft.	20 ft.	185 lbs.
540-2	1/2 HP	57 ft.	700 lbs.	26 ft.	18 ft.	22 ft.	190 lbs.
545-3	1/3 HP	57 ft.	550 lbs.	24 ft.	16 ft.	20 ft.	185 lbs.
545-2	1/2 HP	57 ft.	700 lbs.	30 ft.	18 ft.	24 ft.	190 lbs.
550-2	1/2 HP	60 ft.	900 lbs.	36 ft.	20 ft.	26 ft.	205 lbs.
550-4	3/4 HP	60 ft.	1200 lbs.	46 ft.	26 ft.	36 ft.	210 lbs.
570-1	1 HP	60 ft.	1800 lbs.	58 ft.	32 ft.	48 ft.	230 lbs.
575	1 HP	60 ft.	1800 lbs.	50 ft.	32 ft.	48 ft.	200 lbs.
590	2 HP	46 ft.		Designed for large roller type gates			280 lbs.

## Models 540, 545, 550, 570, 575 and 590



## Model 530 (not shown)



### Dimensions:

Model	*530	540/545/550/570/575	590
A	17¾"	28¾"	28¾"
B	10½"	16"	16"
C	14¾"	15¾"	16"
D	12¾"	22"	23¾"
E		27¼"	26"
F		13½"	13½"
G		17¾"	17¾"
H		8½"	9"
J		7¾"	5¾"

\*\* The friction clutch is not an automatic reversing device. Its sole function is to minimize damage to the gate operator and to limit major vehicle damage. If pedestrian traffic is a problem and an automatic reversing device is desired, accessories such as gate edges are available. Proper maintenance of friction clutches and periodic testing of gate edges is required to ensure proper operation.

## Model 490

Typical Use: Heavy-duty commercial/ industrial installations

### 490 Added Features:

- 1/2 or 1 H.P., motors (resilient mount on single phase; available in all standard voltages)
- 40:1 worm gear and chain and sprocket motor speed reduction
- Contactor starter
- Adjustable friction clutch\*
- Full systems capabilities
- Open override circuit
- UL/CSA listed
- Advanced audio warning module

### Specifications:

Model 490 Swing Gate Operator shall have a (minimum 1/2 H.P.), \_\_\_\_\_ volt, \_\_\_\_\_ phase high starting torque motor. Single-phase motor is internally protected against overload and undervoltage in both the start and run winding. Three-phase motor has external overload protection. Motor contactor meets NEMA size "D" specifications. Motor speed reduction shall be: single-belt, driven worm gear speed reducer (40:1 ratio) with #40 chain and sprocket final drive. Limit switches are readily adjustable and securely locked in place after adjustment. Operator shall have open override circuitry to provide complete control of gate (from external controls) while closing, and an adjustable friction clutch for mechanical overload protection. Weatherproof cover shall be 11-gauge painted, galvanized steel. Heavy-duty crank arm. Pre-wired to receive radio controls. UL/CSA listed.

*\*The friction clutch is not an automatic reversing device. Its sole function is to minimize damage to the gate operator and gate and to limit major vehicle damage. If pedestrian traffic is a problem and an automatic reversing device is desired, accessories such as gate edges are available. Proper maintenance of friction clutches and periodic testing of gate edges is required to ensure proper operation.*

## Model 470

Typical Uses: Light-commercial and heavy-duty vehicular installations.

### 470 Added Features:

- 1/3 H.P., 115V, single-phase motor
- Durable solid-state circuitry
- Motor load monitor
- Left/Right hand electrical conversion on the circuit board
- Time-delay to close, reversal delay, and maximum run timer options are standard
- Full systems capability
- UL/CSA listed

### Specifications:

Model 470 Swing Gate Operator shall have a 1/3 H.P., 115V single-phase resilient mount motor with internal thermal overload protection. Combination belt, worm gear, and chain speed reduction with adjustable friction clutch for mechanical overload protection. Limit switches are adjustable and securely locked in place after adjustment. All control functions shall be controlled by a single solid-state circuit board which incorporates the following: timer to close, motor load monitor, maximum run timer, locked rotor protection, varistor surge protection, Left/Right hand conversion switches, and a built-in diagnostic system for ease of service. Lockable manual disconnect. Cover of 11-gauge painted galvanized steel. UL/CSA listed.

## Model 430

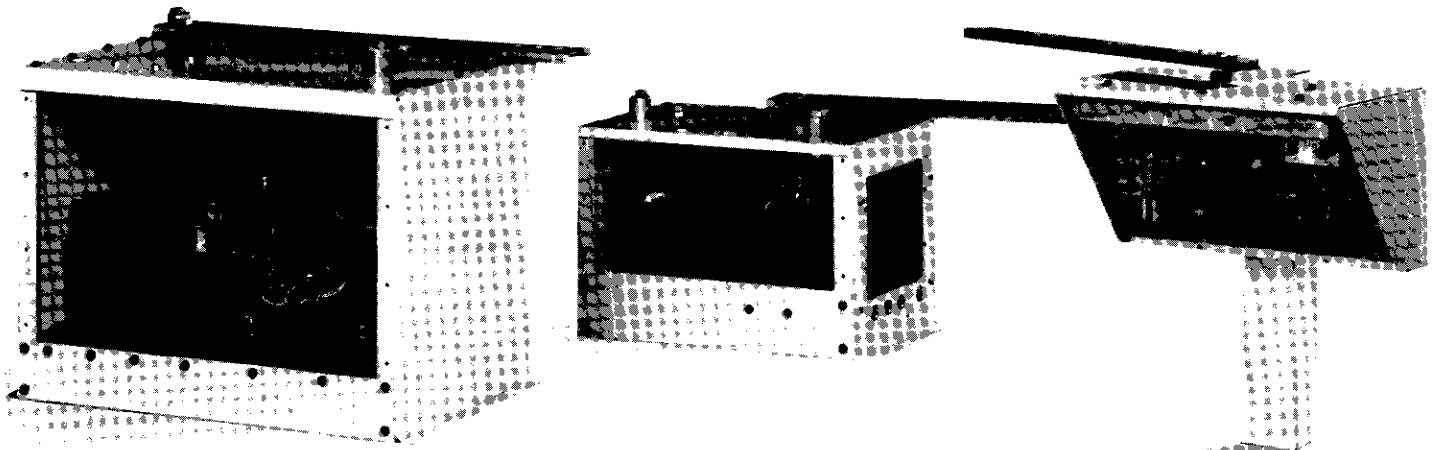
Typical Use: Light-duty vehicular installations. Designed for chain link, tubular steel or ornamental iron gates. No solid gates.

### 430 Added Features:

- 1/3 1 H.P., 115V, single-phase motor
- Durable solid-state circuitry
- Left/Right hand electrical conversion on the circuit board
- Quick disconnect. Linkage can be locked for added security.
- Worm gear drive mechanism
- Obstruction Reverse Adjustment (Vehicular)
- UL/CSA listed

### Specifications:

Model 430 Swing Gate Operator shall have a 1/3 H.P., 115V single-phase permanent split capacitor motor with integral thermal overload protection. Worm gear drive with double chain reduction. Limit switches are readily adjustable. All control features shall be controlled by a single solid-state circuit board which incorporates the following: maximum close timer, reversal delay, Left hand/Right hand conversion switches, varistor surge protection, zero start up circuitry and "power-on" indicator. Operator also has an obstruction sensing adjustment to reverse the gate should it meet a vehicle while closing or to stop the gate should it meet a vehicle while opening. Lockable manual disconnect. Enclosure 14-gauge painted galvanized steel. UL/CSA listed.





# Uses And Applications

92835/STA  
BuyLine 2024

## Model 400 AutoGate

Typical Use: Light vehicular swing gates for limited duty.

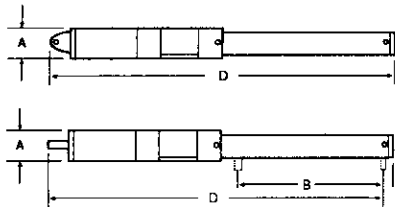
### 400 Added Features:

- Battery powered
- Programmable micro processor circuit board
- Built-in on/off switch
- Built-in master/slave capability and time delay to close
- Transient overvoltage "spike" protection
- Uses Solar Power or Transformer to trickle charge the battery
- UL and CUL listed

### Specifications:

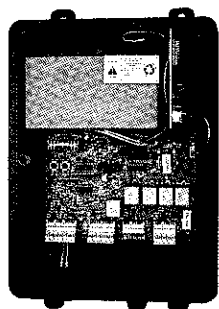
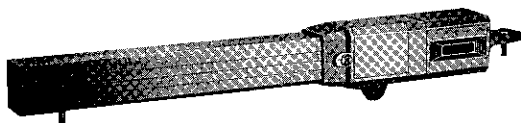
Model 400 "AutoGate" vehicular swing gate operator shall have a 12 Vdc. motor with a nominal operating current of 5.0 Amp. and 12,000 R.P.M. Operator shall have planetary gearing of 144:1 for speed reduction. The maximum stroke length will be 10.0 inches with a nominal speed of .55 in./sec. The operators nominal opening time shall be 18 seconds (90° opening). The operator shall have positive full open and full close limits. The operator shall be able to observe and then react to obstructions in either the opening or closing directions. The operator shall be powered by a sealed lead acid battery with minimum rating of 12 Vdc./6.5 Amp. hour. The operator shall be able to trickle charge the battery from either a solar panel or a plug-in transformer. The trickle charge circuit shall be built into the operator's micro processor. The operator shall be U.L. listed.

### Model 400



### Dimensions:

Model	A	B	C	D
400	3.15"	10"	26.38"	28.78"



Control Box

## Uses And Applications

Stanley's line of swing gate operators can be used for all commercial, industrial and vehicular applications. They're the perfect operators for apartments and condominiums, too, because Stanley operators are designed for the demands of heavy traffic flow.

Stanley operators fit all types of gates including wood, chain link, ornamental iron and other metal gates.

The model 400 light vehicular swing gate operator is ideal for locations that do not have an electrical power source nearby. The solid-state vehicular gate operator, Model 430, is designed for swing gates up to 10 feet wide, weighing up to 150 pounds. It is the ideal way to add security, privacy and value to a home.

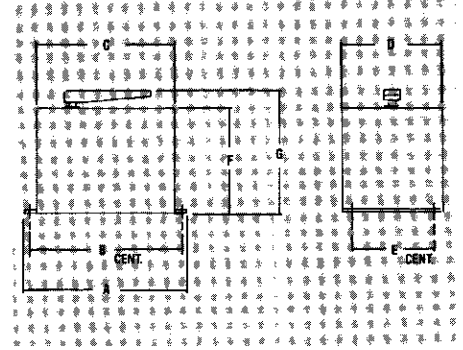
Model 470 is the perfect solution for light-commercial and heavy-duty vehicular applications. The 470 employs the latest solid-state technology and features time-delay-to-close and a maximum-run timer, standard.

For big jobs, there's the Model 490. The 490 is Stanley's most powerful swing gate operator, designed for heavy-duty or high-frequency installations with gates up to 26 feet wide (single gate) and weighing up to 1,200 pounds.

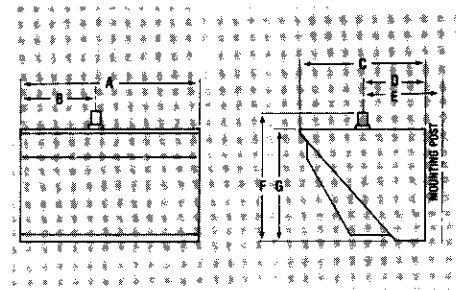
### General Features:

- Weather-resistant enclosure
- Two-piece gate linkage, except Model 400
- 24-volt control circuit (12-volt DC on Model 400)
- Adjustable open and close limit switches
- Can be signaled from a full range of accessories

## Model 470 and 490



### Model 430



### Dimensions:

Model	430	470	490 (AHSG)
A	17 <sup>3</sup> / <sub>4</sub> "	23 <sup>3</sup> / <sub>4</sub> "	31"
B	7 <sup>1</sup> / <sub>2</sub> "	23 <sup>1</sup> / <sub>2</sub> "	29 <sup>1</sup> / <sub>2</sub> "
C	12 <sup>3</sup> / <sub>8</sub> "	28 <sup>1</sup> / <sub>4</sub> "	28"
D	5 <sup>9</sup> / <sub>16</sub> "	13 <sup>3</sup> / <sub>8</sub> "	18 <sup>5</sup> / <sub>8</sub> "
E	7 <sup>5</sup> / <sub>16</sub> "	10"	14"
F	12 <sup>3</sup> / <sub>8</sub> "	15 <sup>1</sup> / <sub>8</sub> "	22 <sup>1</sup> / <sub>8</sub> "
G	10 <sup>1</sup> / <sub>8</sub> "	18 <sup>1</sup> / <sub>4</sub> "	25"

## Specifications And Recommended Capacities:

Model	Motor	Seconds to Open Gate	Maximum Gate Leaf	Maximum Gate Weight	Shipping Weight	Frequency** of Use (Complete Cycles/Hour)
400	12Vdc	15 to 17 secs.	10 ft.	250 lbs.	30 lbs.	30/day
430	1/3 HP	13 to 17 secs.	10 ft.	150 lbs.	50 lbs.	5-6
470	1/3 HP	12 to 15 secs.	14 ft.	500 lbs.	180 lbs.	15
490-2	1/2 HP	12 to 15 secs.	20 ft.	800 lbs.	325 lbs.	25
490-1	1 HP	12 to 15 secs.	26 ft.	1200 lbs.	340 lbs.	25

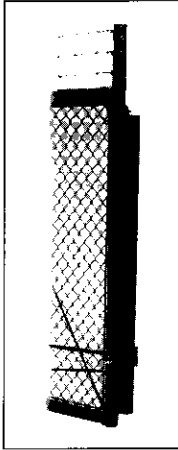
\*\* (Cycle equals 1 full opening and closing of gate.)

# STANLEY GATE OPERATOR SAFETY ACCESSORIES

Automatic gate operators are installed in millions of residential, business and commercial sites throughout the world. Proper installation, operation and maintenance are necessary to help provide a safe, trouble-free system.

Stanley manufactures many quality accessories that help in preventing serious injuries on gate operating systems. So, when designing and installing your gate operator system, don't forget Stanley Gate Operator Safety Accessories.

## Gate Edges

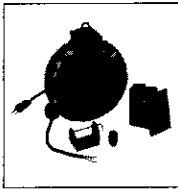


### Electric Gate Edge

**Part No. 24771**

Delivers signal to operator when gate hits an obstruction. Comes in padded, 5-foot lengths for simple mounting. The gate edge **must** be installed with one of three items:

- Cable Reel
- Coil Cord
- Gate Edge Transmitter



Part No. 24777

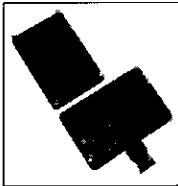
### Gate Edge System Kits

**Part No. 24783**

24771 Gate edge with 24777 cable reel (At Left)

**Part No. 24784**

24771 Gate edge with 24773 coil cord (Not Shown)

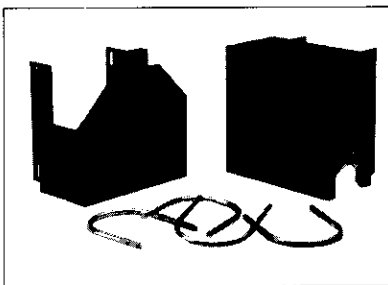


Part No. 105104

**Part No. 24785 (Shown)**

24771 Gate edge with 105104 gate edge transmitter

## Roller Guards

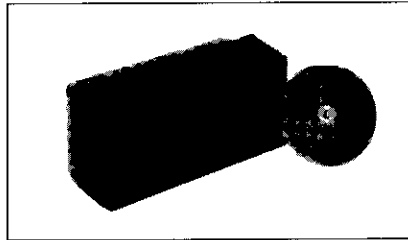


### Roller Guards

**Part No. 24412**

Provides the utmost protection on all open roller type gates. Each kit contains guards for two top and bottom rollers and everything needed for mounting.

## Photo Electric Cells

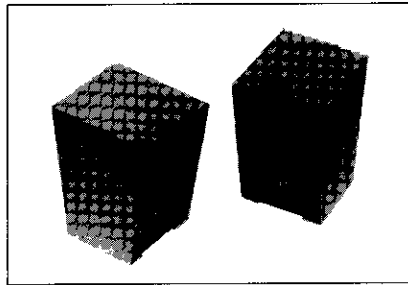


### Photo Electric Control

**Part No. 24775, 40 ft. max range**

**Part No. 24758, 75 ft. max range**

Provides non-contact reversing or stopping of gate operator when invisible beam is broken. Required when there is pedestrian traffic. Reflective design minimizes wiring.

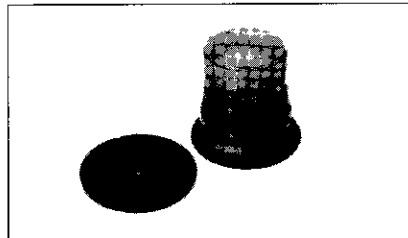


### PhotoGuard 4x™

**Part No. 49017**

When gate is closing and the infrared beam is broken a signal is sent to the operator to stop or reverse direction. It's advanced modulated infrared beam reduces the effect of sunlight, rain, dust or dirt — virtually eliminating expensive call-backs. Enclosed in NEMA 4x housing.

## Visual Warning Systems



### Strobe Light

**Part No. 24823 12vdc**

**Part No. 24824 115vdc**

**Part No. 24825 230vdc**

Strobe light warning beacon can be wired for many different applications.

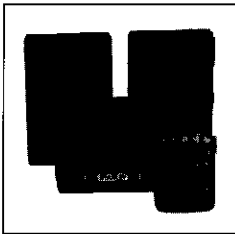
# STANLEY®

# STANLEY GATE OPERATOR ACCESSORIES

The design of your security system and the accessories you choose will depend upon several considerations particular to your situation. Stanley Accessories are specifically

designed and tested to function with Stanley Gate Operators. Make sure your system incorporates Stanley specification accessories.

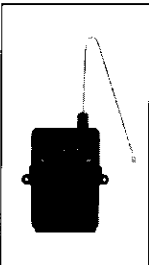
## Transmitters



**Mini, Part No. 24910**  
**Single-Channel, Part No. 24911**  
**Two-Channel, Part No. 24904**  
**Four-Channel, Part No. 24905**

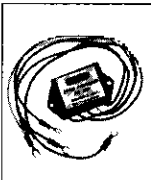
Stanley digital radio transmitters offer 1,024 possible codes that can be changed at any time. The transmitters are powered by a 9-volt battery (12-volt for the Mini model) which is included. The two and four channel transmitters feature completely independent code settings which control separate receivers from one transmitter. They're perfect for operating multiple garage door/gate operator transmitter combinations. Separate radio receivers required.

## Super Digital Radio Receiver



**Part No. 203203**  
Our original radio receiver includes a coaxial socket antenna for clear reception. Especially suited for remote gate operation, the 300101 kit includes the mounting bracket, antenna and 15-foot coax cable.

## Surge Suppressors



**Part No. 24780 (24 vac)**  
**Part No. 24781 (115 vac)**  
**Part No. 24782 (230 vac-1Ø)**  
Protects operator and controls from voltage surges and spikes.

## Timer Modules



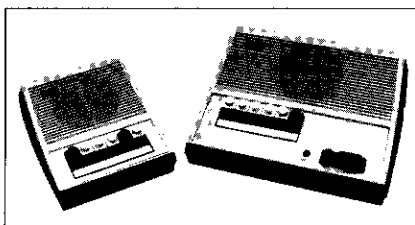
**Part No. 24790**  
Automatically closes gate after vehicle has passed through.

## 7 Day Timer



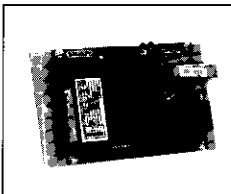
**Part No. 24778**  
12 Programmable on/off times, LCD display, easy programming.

## Intercoms



**Part No. 24760**  
Offering the convenience and security of point-to-point intercommunication, our complete system includes the outdoor call station on a gooseneck stand and indoor call station. There is also a keyswitch in the face of the outdoor station for local control of your gate.

## Loop Detector



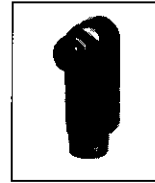
**Part No. 4101725 (Fail Secure)**  
Provides the industry's most advanced features. Compact size and self tuning make installation easy. The detector has a loop diagnostics feature and selectable sensitivity levels to improve performance. Fail Safe is also available.

## Long Distance Interface

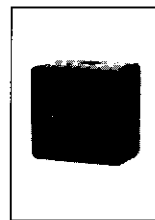


**Part No. 24776**  
Boosts signal from the operating device to the operator.

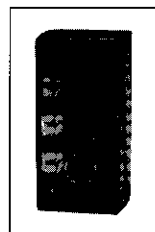
## Exterior Controls



**Keyswitch for Post Mounting**  
**Part No. 24755**



**Single Button**  
**Part No. 3200684**  
A convenient, heavy-duty open and/or close control station for external use. Can be used with any Stanley Opener. Also available with keyswitch lock.



**Exterior 3-Button Station**  
**Part No. 3200685**

## Interior Controls



**Standard Duty 3-Button Station**  
**Part No. 3200663**  
Various other station assemblies are also available for remote control applications.



Place controls far enough from the gate so that a user cannot touch the gate while operating the controls. However, the controls should be placed where the user has full view of the gate while operating.

**STANLEY**

# With Stanley Operators you lock in solid support.

## You Can Count on a Stanley Master Distributor for Help

Your Stanley Master Distributor is your local source of Stanley gate operators and accessories. He's specially trained to provide you with the support you need to sell and service Stanley gate operators.

## Local Source

Stanley Master Distributors are like local warehouses. Because they are located across the country, you can take advantage of reduced freight charges and fast delivery on operators and parts.

## Installation Assistance

Master Distributors are available to help train your personnel. They can also assist with difficult installations or designing systems.

## Service Support

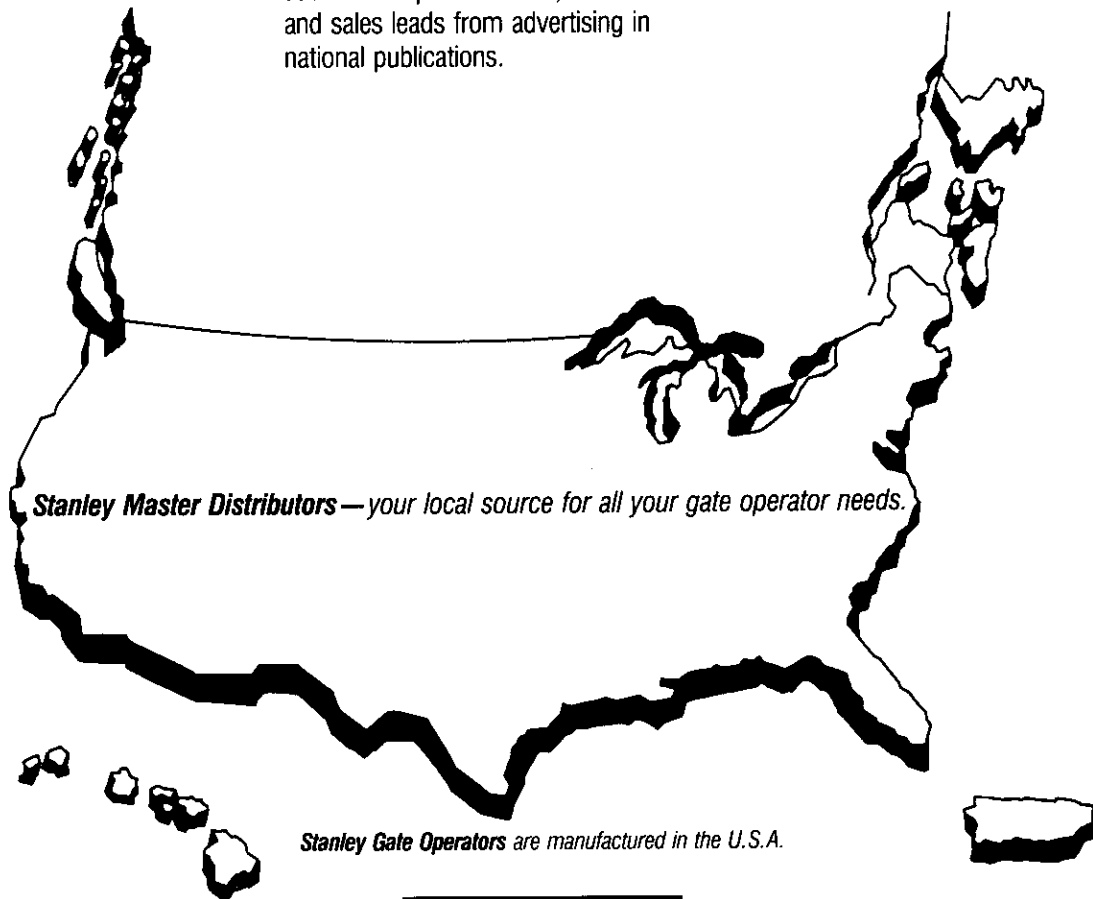
Look to your Master Distributor for knowledgeable service support including maintenance, repairs and replacement. Your Master Distributor and Stanley will also provide all the sales support you need including a Yellow Page program, audio-visual presentations, sales literature and sales leads from advertising in national publications.

## The Stanley Name

Finally, you get the advantage of the Stanley name. Nothing inspires customer confidence like our reputation for quality. It's the reason we're the number one manufacturer of automatic gate operators. And the reason that our products will be such great performers for you.

For more information, call (810) 528-1400 for the Master Gate Distributor nearest you.

Stanley reserves the right to make changes at any time in design, materials, specifications, and also to discontinue products, without notice.



# STANLEY®



See **SweetSource®** for additional product information. Call **1-800-551-3796** to order **SweetSource**.

Whistler Auto-Mation Products  
2400 East Lincoln  
Birmingham, MI 48009  
(810) 528-1400