

**LEWIS
ELECTRIC**
444 W. Mowry Street
Homestead, FL 33030

**Thank You for downloading at the
Lewis Electric Web Site.**

**We hope you found the information you
were looking for and look forward to doing
Business with you.**

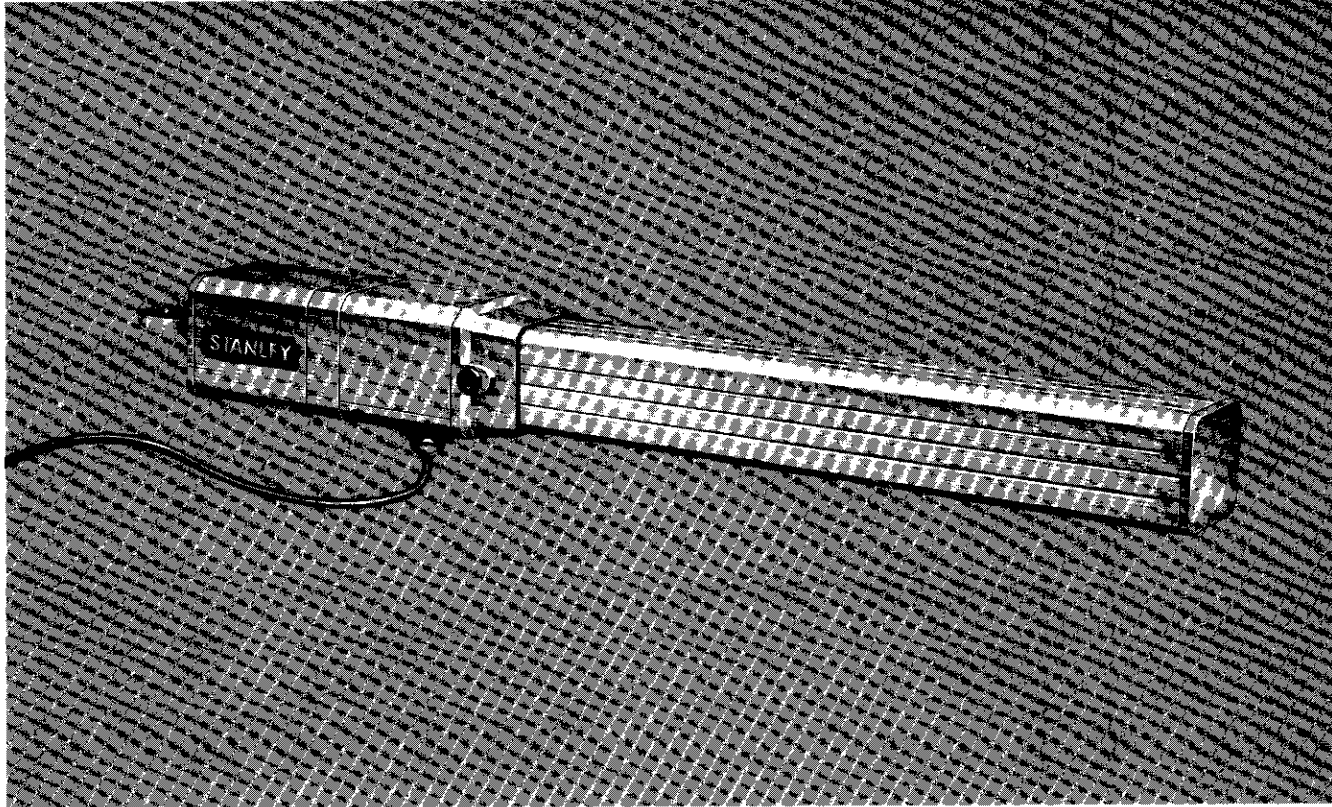
**This information is Copyrighted by The
Whistler Corporation and is subject to
change without notice.**

**Please read all of the Warnings regarding
Installation and Design of a complete
operator system!**



Dade County (305) 247-3721 Fax (305) 245-9347 Monroe County (305) 852- 7585
State License - EC #0001734 Dade CC# 2005 Monroe EC# 807
<http://www.lewiselec.com/> E-Mail Info@lewiselec.com

For Light Vehicular Swing Gate Operator Applications



For security, convenience and dependable operation, the Model 400 is the perfect match for light vehicular swing gate applications. Because it operates from a 12 volt battery, it's ideal for locations that do not have an electrical power source nearby.

Typical Uses:

The Model 400 AutoGate d.c. powered swing gate operator offers superb performance in light duty applications. It's compact enough to fit on most gates, and is an excellent choice for jobs in which traditional sized swing gate operators would be too large. For convenience, its 12 Vdc battery can take a charge from either a transformer or a solar panel.

Features:

- Battery Powered: sealed lead acid 12 Vdc., 6.5 Ah battery supplied.
- Built-in Trickle Charge Circuit: from either the plug-in step down transformer or solar panel.
- Built-in Positive Limits: for full open and close positioning.
- Built-in On/Off Switch: can be used to manually shut down the system.

- Hold Feature: will enable the gate to be held in any position desired and will ignore any input signal or time delay to close.
- Quiet Operation.
- Accepts Multiple Types of Controls: will work with one button control, three button control and external reversing devices such as photo beams, edges, etc.
- Transient Overvoltage "Spike" Protection.
- Operator mounts easily to the gate.
- Built-in master slave capability.
- 1-year warranty.
- UL/CUL listed.

State Of The Art Electronics:

Programmable Micro Processor Circuit Board – allows for programming the automatic time delay to close.

Self Teach-n-Learn Micro Processor – teaches itself the maximum run time with auto shut-off, automatic reversing/stop current sensing.

Automatic Low Voltage Shut-off – protects battery by shutting down the system if battery falls below recommended voltage.

LED indicators – indicates programming sequence, battery voltage and charging.

Depend on Stanley

The Stanley name is your assurance of American-built quality. Stanley is the industry leader, with careful quality control procedures and operational testing during each step of production.

A brochure on Gate Operating Safety is available from Stanley. Contact us for your copy.

Distributed By:

STANLEY®

MODEL 400 AUTOGATE™ OPERATOR

Model 400 D.C. Vehicular Swing Gate Operator for Light Duty Applications

Specifications:

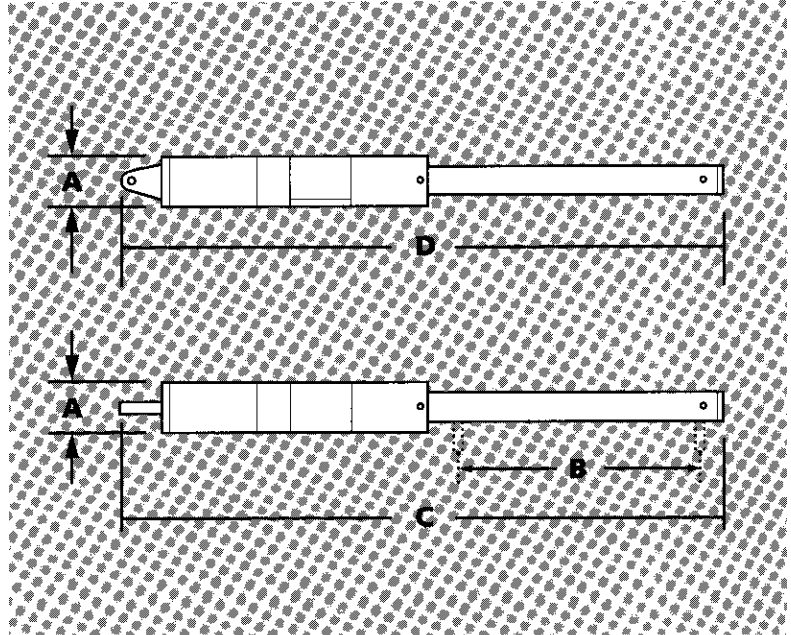
Model 400 "AutoGate" vehicular swing gate operator shall have a 12 Vdc. motor with a nominal operating current of 5.0 Amp. and 12,000 R.P.M. Operator shall have planetary gearing of 144:1 for speed reduction. The maximum stroke will be 10.0 inches with a nominal speed of .55 in./sec. The operators nominal opening time shall be 18 seconds (90° opening). The operator shall have positive full open and full close limits. The operator shall be able to observe and then react to obstructions in either the opening or closing directions. The operator shall be powered by a sealed lead acid battery with minimum rating of 12 Vdc./6.5 Amp. hour. The operator shall be able to trickle charge the battery from either a solar panel or a plug-in transformer. The trickle charge circuit shall be built into the operator's micro processor. The operator shall be U.L. listed.

Gate and Weight Capacities:

Maximum Length	vs.	Maximum Weight
0 to 10 ft.		250 lbs.

Dimensions:

Model	A	B	C	D
400	3.15"	10"	26.38"	28.78"



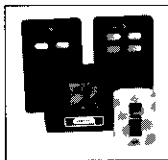
Recommended Capacities of Model 400:

Model	Operating Voltage	Time To Close/Open	Est. Cycles Per Day	Operating Current
400	12 Vdc.	17 sec.	30	5.0 amps

Accessories to add even greater convenience:

Transmitters

Mini, Part No. 24910
Single-Channel, Part No. 24911
Two-Channel, Part No. 24904
Four-Channel, Part No. 24905



Stanley digital radio transmitters offer 1,024 possible codes that can be changed at any time. The transmitters are powered by a 9-volt battery (12 volt for the Mini model) which is included. The two and four channel transmitters feature completely independent code settings which control separate receivers from one transmitter. They're perfect for operating multiple garage door/gate operator combinations. Separate radio receivers required.

Radio Receiver

Part No. 49058

Installs easily into the controller and allows for easy and convenient operation from Stanley digital radio transmitters.



Solar Panel

Part No. 49060

A regulated solar power system that maintains the battery charge. When using a solar panel as a charging source, cycle rates may be reduced by as much as 25%.



Plug-In Transformer

Part No. 49059

An electrical power system that maintains the battery charge. Allows up to 30 cycles per day. Cannot be used simultaneously with the solar panel.



STANLEY®

GATE OPERATORS

Stanley Door Systems
1225 East Maple Road
Troy, MI 48083
(810) 528-1400