

**LEWIS
ELECTRIC**
444 W. Mowry Street
Homestead, FL 33030

**Thank You for downloading at the
Lewis Electric Web Site.**

**We hope you found the information you
were looking for and look forward to doing
Business with you.**

**This information is Copyrighted by The
Whistler Corporation and is subject to
change without notice.**

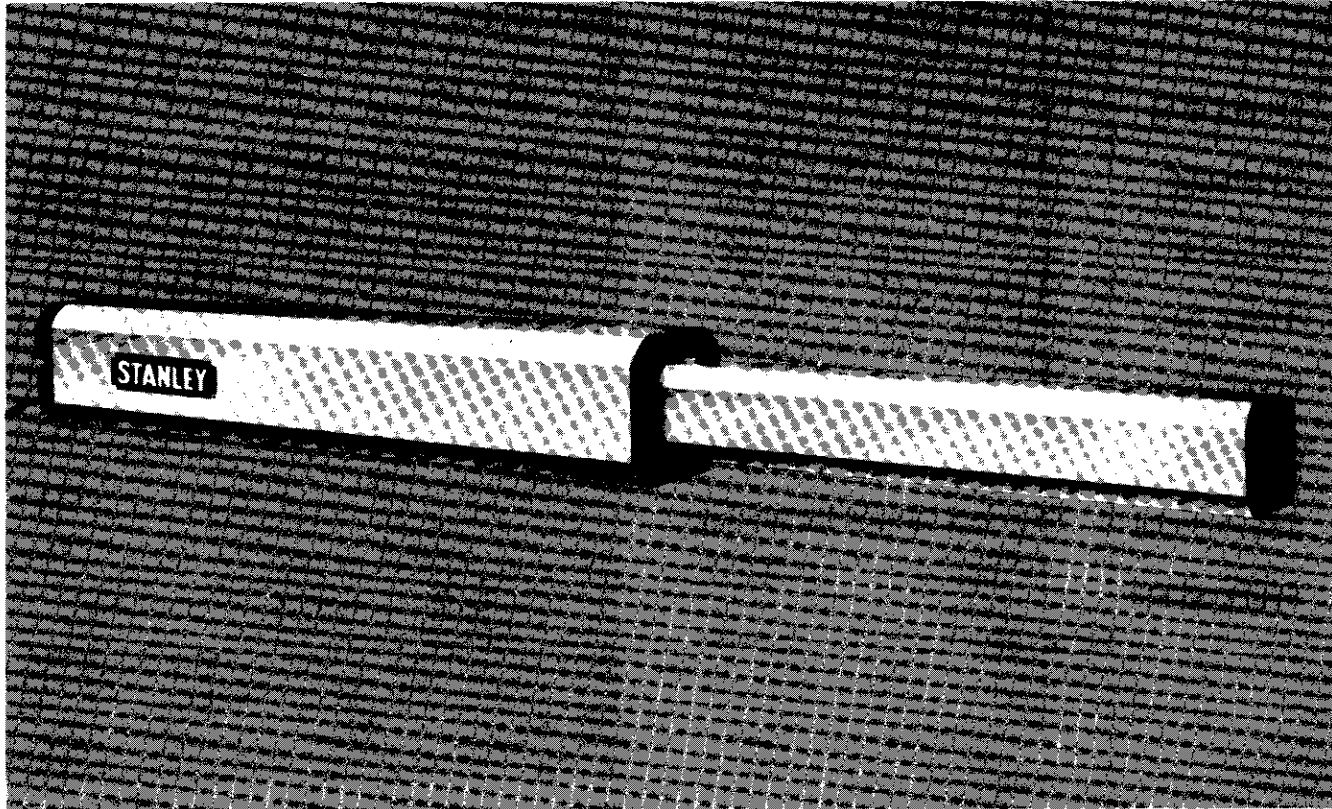
**Please read all of the Warnings regarding
Installation and Design of a complete
operator system!**



Dade County (305) 247-3721 Fax (305) 245-9347 Monroe County (305) 852- 7585
State License - EC #0001734 Dade CC# 2005 Monroe EC# 807
<http://www.lewiselec.com/> E-Mail Info@lewiselec.com

MODEL 440 HYDRAULIC OPERATOR

**For Light
Commercial
Vehicular
Swing Gate
Operator
Applications**



For security, convenience and dependable operation, the Model 440 is the perfect match for light commercial vehicular swing gate applications. Its hydraulic design means proven performance and fewer moving parts that will require less maintenance.

Typical Uses:

Stanley's Model 440 hydraulic vehicular swing gate operator is ideal for many light commercial applications. It is compact enough to fit on most gates and can be used on those gates that lack the space to place a traditional gate operator. Its small size and sleek design allow it to blend into any landscape environment.

Features:

- Operator mounts easily to the gate
- Separate control box can operate a single gate or a pair of gates working in tandem
- Full systems capability
- Manual release
- Easily adjustable limits and sensitivity
- Large controller (Part No. 24600) utilizes plug-in components and is designed for the easy installation of accessories
- Small controller (Part No. 24997) will accept radio receiver only
- Virtually noise-free
- Low maintenance
- 1-year warranty
- UL listed (complete operator)

Depend on Stanley

The Stanley name is your assurance of American-built quality. Stanley is the industry leader, with careful quality control procedures and operational testing during each step of production.

A brochure on Gate Operating Safety is available from Stanley. Contact us for your copy.

Distributed By:

STANLEY

HYDRAULIC SWING GATE OPERATOR

**Model 440
Hydraulic
Vehicular
Swing Gate
Operator
for Light
Commercial
Applications**

Specifications:

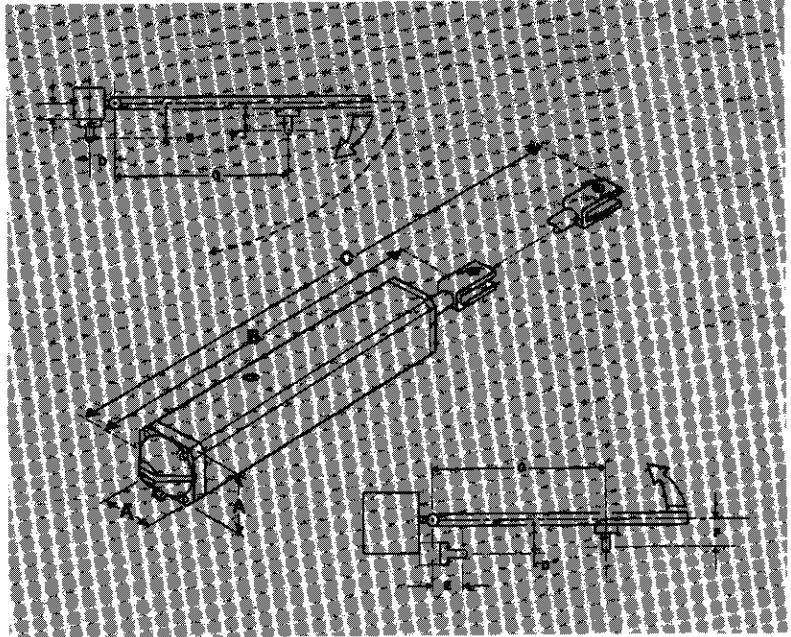
Model 440 Hydraulic Vehicular Swing Gate Operator shall have a 115 VAC 1 Phase, 60 Hertz Motor with current draw of 3.5 Amp and 1700 R.P.M. Operator shall have a thermal overload of 135°C. The Operator shall have a maximum rod stroke of 8.6 in., rod speed of .50 in./sec; and output force maximum of 830 lbs. The Operator's maximum pressure shall be 426 pounds per square inch with 2 integral/adjustable pressure valves. The Operator's opening time shall be 18 seconds (90° opening). The Operator's control box shall be rated NEMA 4. The Operator shall have integral mounting flanges for ease of installation, and have provisions for locking. The Operator shall use "Shell LMH" hydraulic fluid. The Operator shall be UL listed.

Gate and Weight Capacities:

Maximum Length	vs.	Maximum Weight
0 to 8 ft.		500 lbs.
8 to 10 ft.		300 lbs.

Dimensions:

Model	A	B	C	D	E	F	G
440	3 1/2"	22" retracted	31" extended	3 1/2" - 4"	3 1/2" - 4"	3"-3-1/2"	25 1/2"



Recommended Capacities of Model 440:

Model	Power Consumption	Motor R.P.M.	Pulling Force	Pounds Per Square Inch	Maximum Gate Size	Maximum Gate Opening
440	335W	1700	830 lbs.	426 max.	10 ft.	100°

Accessories to add even greater convenience:

Transmitters

Mini, Part No. 24910
Single-Channel, Part No. 24911
Two-Channel, Part No. 24904
Four-Channel, Part No. 24905



Stanley digital radio transmitters offer 1,024 possible codes that can be changed at any time. The transmitters are powered by a 9-volt battery (12-volt for the Mini model) which is included. The two and four channel transmitters feature completely independent code settings which control separate receivers from one transmitter. They're perfect for operating multiple garage door/gate operator combinations. Separate radio receivers required.

Super Digital Radio Receiver

Part. No. 203203



Our digital radio receiver includes a coaxial socket antenna for clear reception. Especially suited for remote gate operation, the 3343001 kit includes the mounting bracket, antenna and 16-foot coax cable.

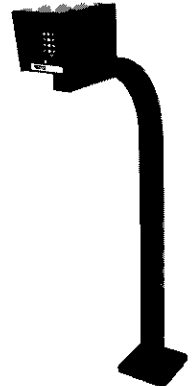
Loop Detector



Provides the industry's most advanced features. Compact size and self-tuning make installation easy. Sensitivity boost allows detection of high vehicles. The detector has a loop diagnostics feature and selectable sensitivity levels to improve performance.

Digital Keyless Entry

Allows access only to those who know the code using the telephone-like button panel.



STANLEY
GATE OPERATORS

Stanley Door Systems
1225 East Maple Road
Troy, MI 48083
(810) 528-1400